

Power System



Battery + Electro Surgical Motor

PRAXIS **2**

www.aygun.com

AYGÜN®
SURGICAL INSTRUMENTS CO., INC.

Organize Sanayi Bölgesi
Yaşar Doğu Cad. No:76
55330 Kutlukent-SAMSUN
TÜRKİYE

Tel : 90 (362) 266 66 80
Fax : 90 (362) 266 93 30
E-mail : aygun@aygun.com
Web : www.aygun.com

2015

■ According to the production programme
Aygün's rights is reserved in production to im-
prove, modify or delete the products declared
in this catalog.

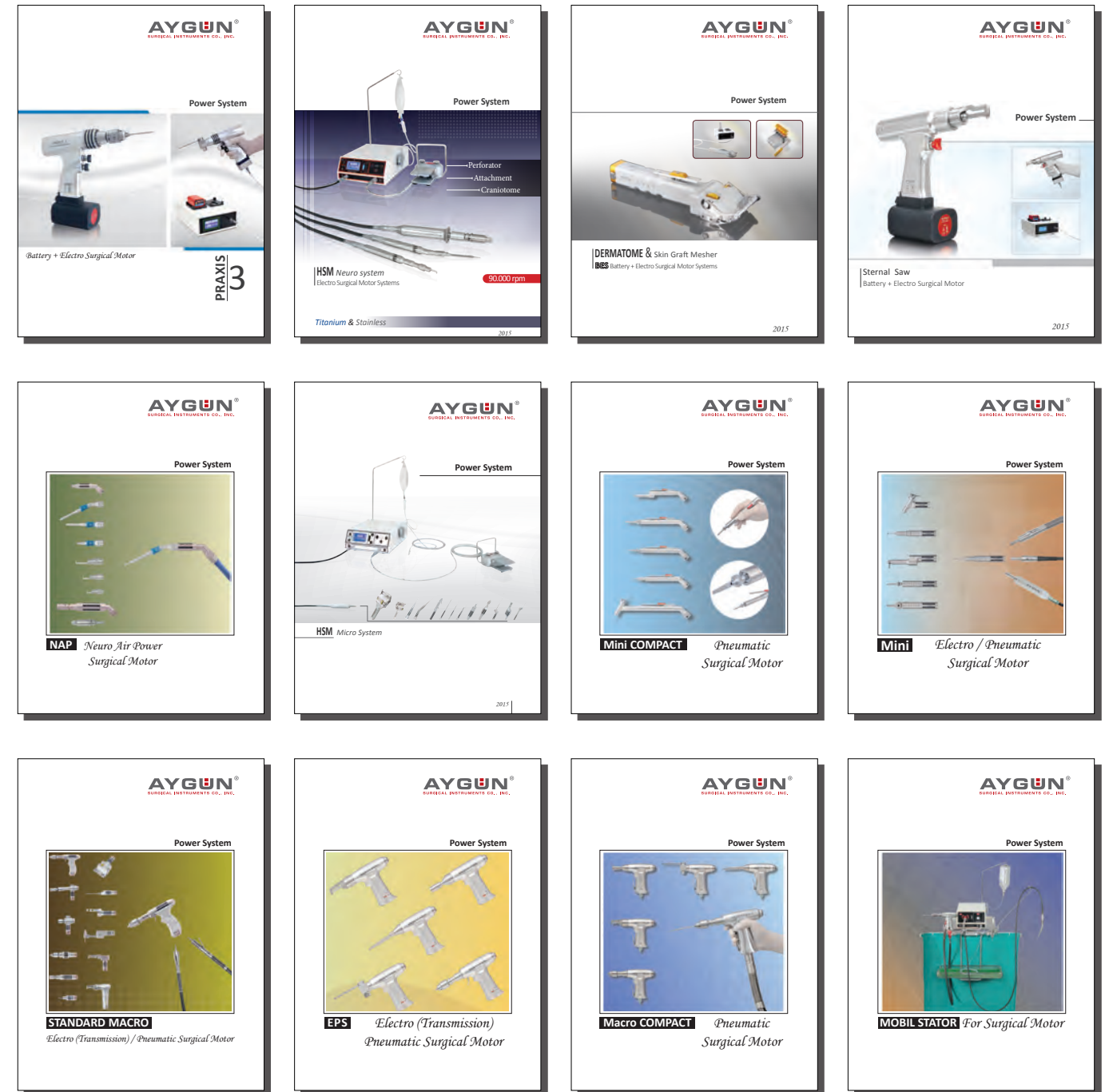
KA - 4013-Y1 Copyright © Aygün Co., Inc
2015 All Right Reserved, Printed in Türkiye



AYGÜN is one of the leading establishment of Turkey in the medical industrial field, starting from neurosurgical field since 1988, at the end of its constant R&D researches, has accomplished the production of instruments for all surgical branches. Along with meeting a large part of Turkey's requirements, AYGÜN proves itself as an expert in the field with the products offered to the world market.

With present catalogues that include standard products and the special products formed on the request of the doctors including thousands of types medical products produced by AYGÜN Besides being a manufacturer, AYGÜN is also a designer firm.

Besides increasing its capacity, AYGÜN, in its new production plants constructed in the Organized Industrial Area of Samsun, aims to present the different models of products to the medical community.



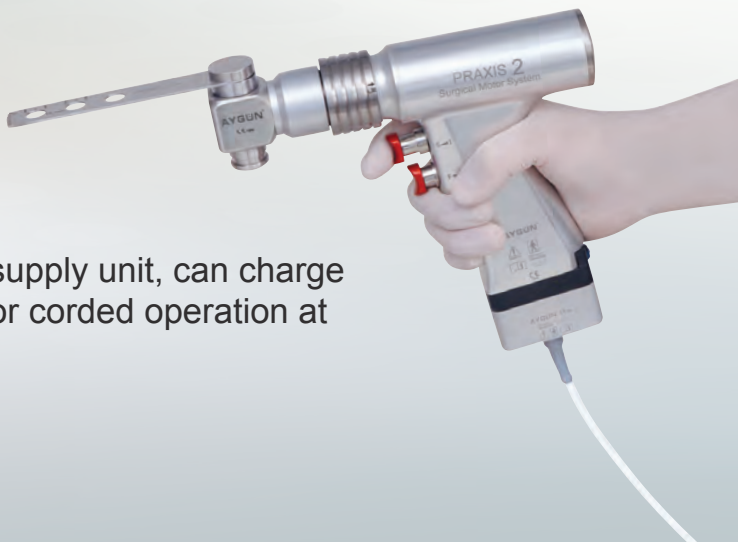


- Aseptic battery loading system



Graphic LCD display shows information about charging status

➔ Battery charging and power supply unit, can charge batteries and supply power for corded operation at the same time.

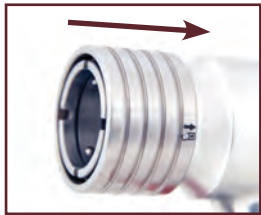


➔ Handpiece can be operated both with battery and power cord



M102-223
Autoclaveable power cord for direct corded use

- Steam sterilisable at 2 bar 134° C
- 4 m / 370 g



- Easy coupling system allows changing / repositioning attachments quickly

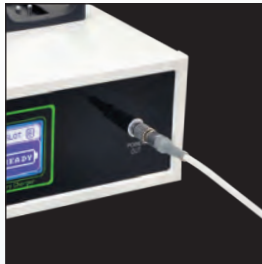


- Dual trigger system simplifies forward / reverse operation



M102-200
Handpiece

- Swiss made powerful DC motor technology
- Dual trigger system for speed control and direction control
- Steam sterilisable at 2 bar 134° C
- 42 x 141 x 148 mm / 1030 g



- Easy connectable power cord maintains continuous operation.



BATTERY CHARGING UNITS



M102-226

Charger unit for 1 battery

- Mains voltage 100-240 Volts, 50-60 Hz
- Charging monitored by LCD screen
- Charging current 1.4 A
- Charging voltage 21.6 Volts
- Protections: Short circuit / Overload / Over voltage
- Generates an audible tone when charging is started or finished
- Not suitable for corded use.
- 137 x 128 x 110 mm / 700 g



M102-224

Charger unit for 2 batteries

- Mains voltage 100-240 Volts, 50-60 Hz
- Charging monitored by LCD screen
- Charging current 1.4 A
- Charging voltage 21.6 Volts
- Protections: Short circuit / Overload / Over voltage
- Generates an audible tone when charging is started or finished
- Suitable for corded use.
- 320 x 230 x 140 mm / 4.9 kg



M102-225

Charger unit for 4 batteries

- Mains voltage 100-240 Volts, 50-60 Hz
- Charging monitored by LCD screen
- Charging current 1.4 A
- Charging voltage 21.6 Volts
- Protections: Short circuit / Overload / Over voltage
- Generates an audible tone when charging is started or finished
- Suitable for corded use.
- 320 x 310 x 150 mm / 5.6 kg

ASEPTIC BATTERY SET



M102-210

Rechargeable Li-ion battery

- Battery capacity: 3.1 Ah
- Voltage: 21.6 Volts
- Led battery charge status indicator
- Generates a "beep tone" when starts working
- Not autoclaveable
- 84 x 63 x 47 mm / 355 g



- Led battery charge status indicator shows instant percentage when the test button is pressed.



M102-211

Autoclaveable battery case

- Steam sterilisable at 2 bar 134° C
- 102 x 82 x 72 mm / 195 g



Aseptic battery loading system

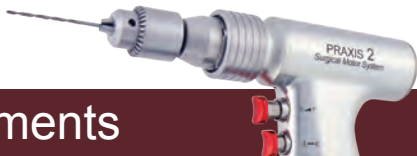


M102-212

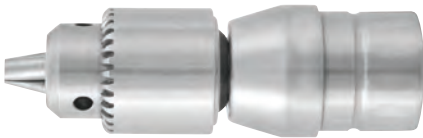
Autoclaveable sterile funnel for aseptic battery loading

- Steam sterilisable at 2 bar 134° C
- 78 x 59 x 35 mm / 70 g

Drill attachments



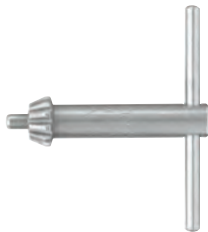
M102-308
Drill attachment with keyed chuck
Cannulated max Ø 4.0 mm
850 rpm / 5 Nm
30 x 77 mm / 205 g



M102-309
Drill attachment with keyed chuck
Cannulated max Ø 6.35 mm
850 rpm / 5 Nm
30 x 93 mm / 260 g



M102-310
Drill attachment with hybrid chuck
Both keyed and keyless operation
Cannulated max Ø 6.35 mm
850 rpm / 5 Nm
34 x 100 mm / 385 g

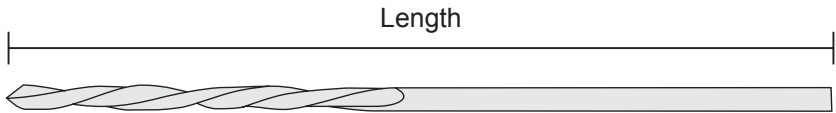


M7-250
Chuck key
for M102-309,
M102-310



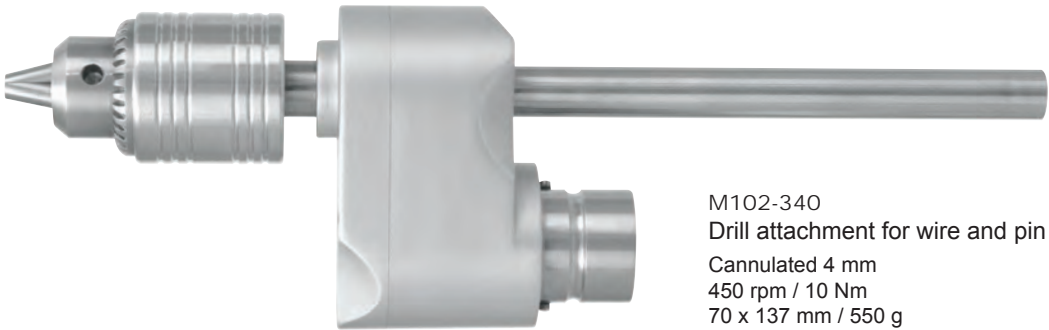
M8-473
Chuck key
for M102-308

Drill bits

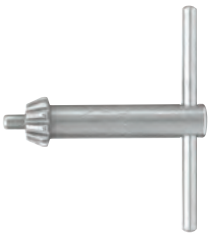


Code	Ø Diameter mm	L Length mm
M7-500	1.5	60
M7-501	2.0	100
M7-502	2.5	100
M7-503	2.7	100
M7-504	3.0	100
M7-505	3.2	100
M7-506	3.5	100
M7-507	4.0	110
M7-508	4.5	130
M7-509	5.0	160
M7-510	6.0	160

Drill attachments

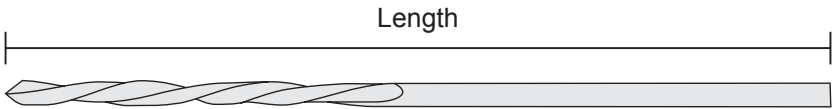


M102-340
Drill attachment for wire and pin
Cannulated 4 mm
450 rpm / 10 Nm
70 x 137 mm / 550 g



M7-250
Chuck key
for M102-340

Drill bits



Code	Ø Diameter mm	L Length mm
M7-500	1.5	60
M7-501	2.0	100
M7-502	2.5	100
M7-503	2.7	100
M7-504	3.0	100
M7-505	3.2	100
M7-506	3.5	100
M7-507	4.0	110
M7-508	4.5	130
M7-509	5.0	160
M7-510	6.0	160



Shank drill bit attachments

SQUARE

M102-360
Attachment for SQUARE shank
850 rpm / 5 Nm
30 x 91 mm / 200 g

AO

M102-361
Attachment for AO shank
850 rpm / 5 Nm
30 x 83 mm / 190 g

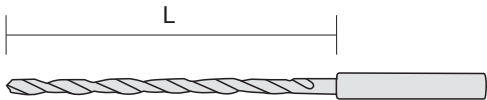
TRINKE

M102-362
Attachment for TRINKE shank
850 rpm / 5 Nm
30 x 81 mm / 200 g

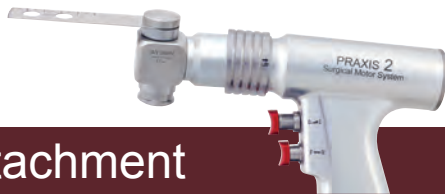
OSTEO

M102-363
Attachment for OSTEO shank
850 rpm / 5 Nm
30 x 89 mm / 225 g

Shank drill bits



L Length mm	Ø Diameter mm	Shank drill bits		
		SQUARE	AO	TRINKE
38	1.5	M7-520	M7-540	M7-560
45	2.0	M7-521	M7-541	M7-561
53	2.5	M7-522	M7-542	M7-562
57	2.7	M7-523	M7-543	M7-563
57	3.0	M7-524	M7-544	M7-564
57	3.2	M7-525	M7-545	M7-565
65	3.5	M7-526	M7-546	M7-566
70	4.0	M7-527	M7-547	M7-567
70	4.5	M7-528	M7-548	M7-568
95	5.0	M7-529	M7-549	M7-569
120	6.0	M7-530	M7-550	M7-570

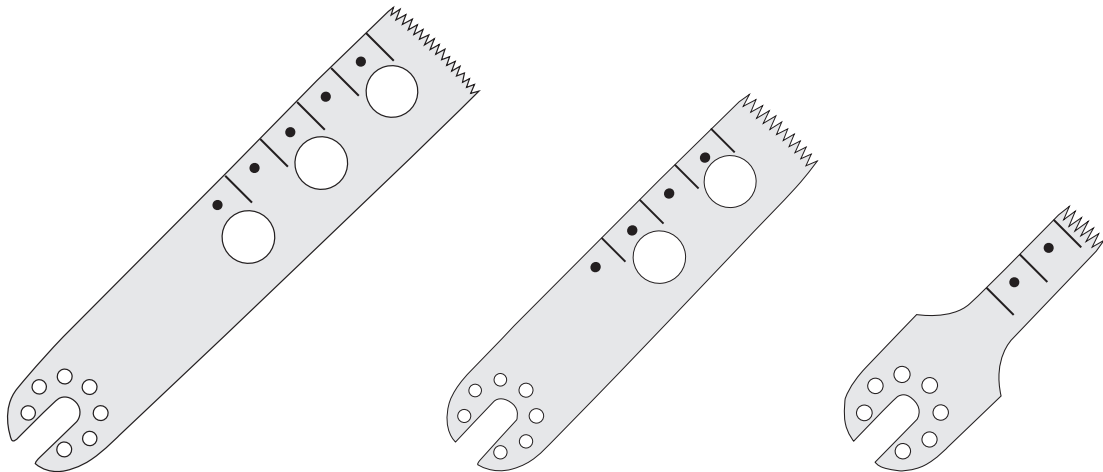


Sagittal saw attachment



M102-300
Sagittal saw attachment
(Without spare blades)

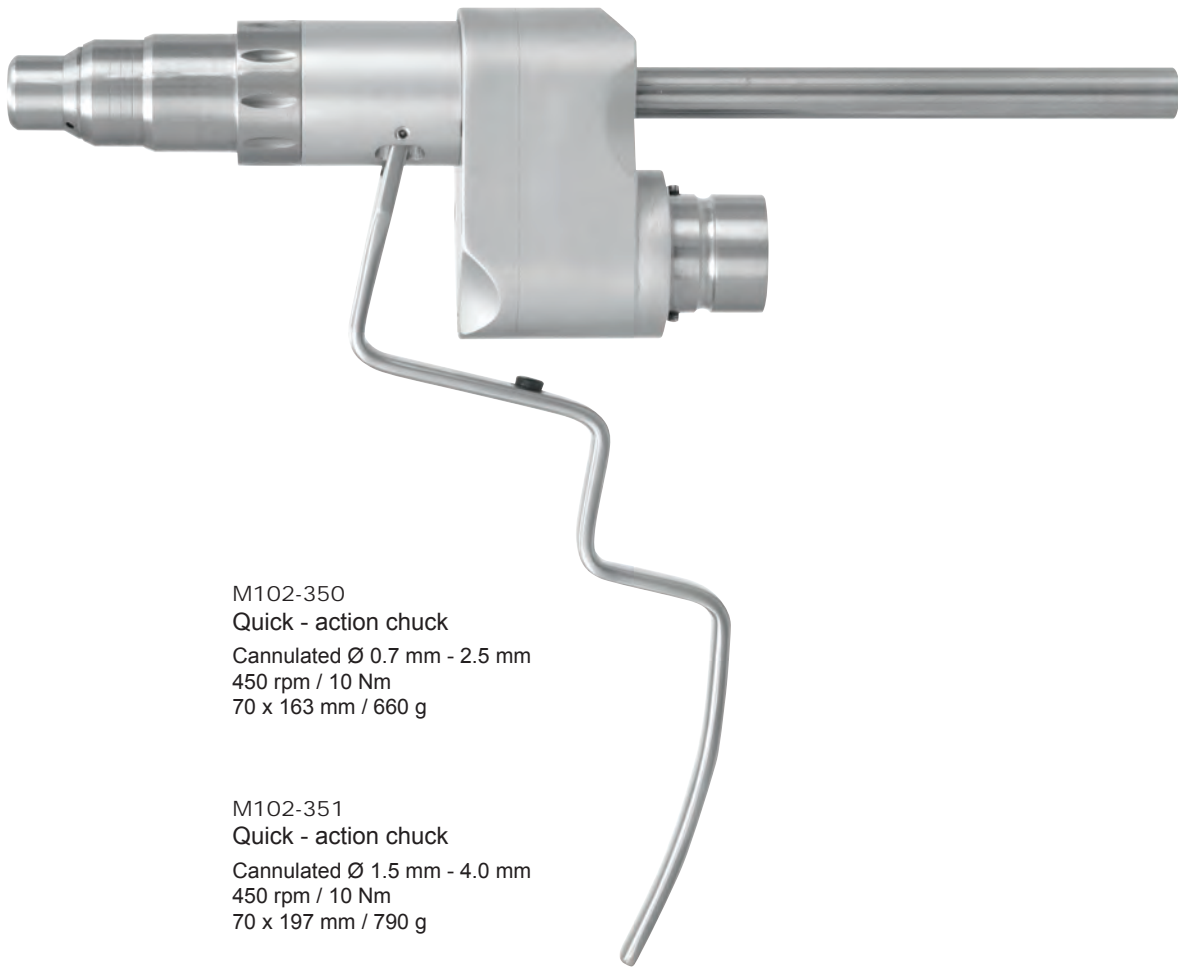
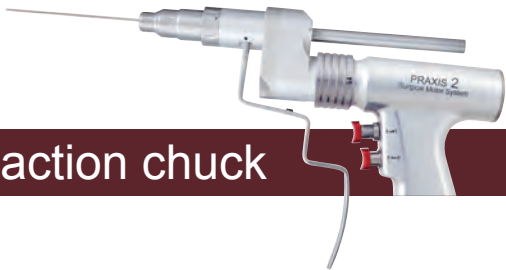
15.000 cpm / \angle 4° 50'
59 x 80 mm / 375 g



Sagittal saw blades

Code	Working Length	Width	Total Length	Thickness
M7-1110	25	5	50	0.5
M7-1111	25	10	50	0.5
M7-1112	35	5	60	0.5
M7-1113	35	10	60	0.5
M7-1114	50	20	60	0.5
M7-1115	50	10	75	0.5
M7-1116	50	15	75	0.5
M7-1117	50	20	75	0.7
M7-1118	50	25	75	0.7
M7-1119	50	30	75	0.7
M7-1120	65	20	90	0.7
M7-1121	65	25	90	0.7
M7-1122	65	30	90	0.7
M7-1123	65	40	90	0.7
M7-1124	65	50	90	0.7
M7-1125	35	75	60	0.5
M7-1126	50	40	75	0.5
M7-1127	75	20	105	1
M7-1128	75	30	105	1
M7-1129	90	15	114	1
M7-1130	90	20	114	1
M7-1131	90	30	114	1
M7-1132	90	25	114	0.9
M7-1133	90	25	114	1
M7-1134	90	25	114	1.27
M7-1135	90	25	114	1.5
M7-1136	105	19	129	1.27

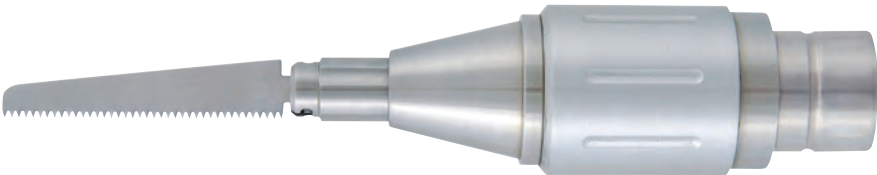
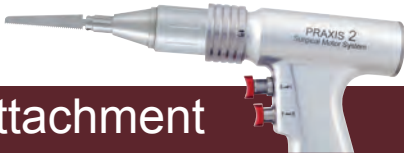
Quick - action chuck



M102-350
Quick - action chuck
Cannulated Ø 0.7 mm - 2.5 mm
450 rpm / 10 Nm
70 x 163 mm / 660 g

M102-351
Quick - action chuck
Cannulated Ø 1.5 mm - 4.0 mm
450 rpm / 10 Nm
70 x 197 mm / 790 g

Reciprocating saw attachment



M102-235
Reciprocating saw attachment
15.000 cpm / \longleftrightarrow 4 mm
37 x 131 mm / 385 g

Reciprocating saw blades



M102-236
Reciprocating Saw blade
62 mm usable length
8 mm width
for M102-235



M102-237
Reciprocating Saw blade
75 mm usable length
13 mm width
for M102-235



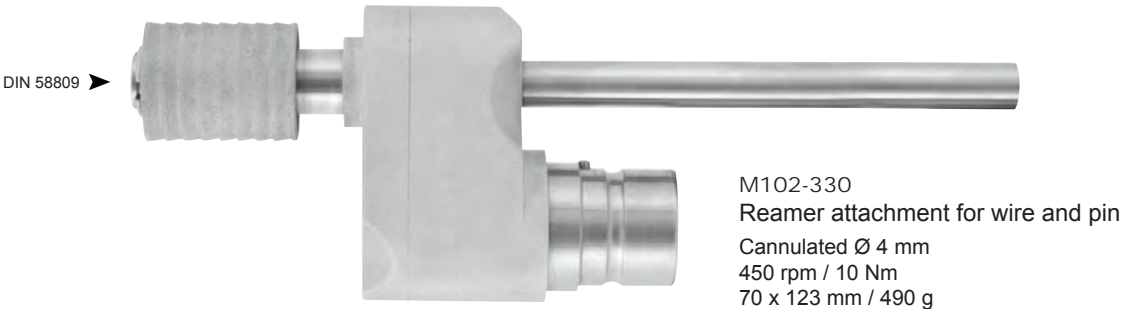
M102-238
Reciprocating Saw blade
60 mm usable length
13 mm width
for M102-235

Orthopedic Attachments

Orthopedic Attachments



Intramedullary reamer attachment



M102-330
Reamer attachment for wire and pin
Cannulated Ø 4 mm
450 rpm / 10 Nm
70 x 123 mm / 490 g

Reamers

Intramedullary reamers, flexible, with drilling heads		Guides, blunt			Guides, with drill tip		
Ø mm	Length 430 mm	Ø mm	Length 600 mm	Length 990 mm	Ø mm	Length 600 mm	Length 990 mm
5.5	M102-920						
6.0	M102-921						
6.5	M102-922	1.9	M102-960	M102-961	1.9	M102-962	
7.0	M102-923						
7.5	M102-924						
8.0	M102-925						
8.5	M102-926						
9.0	M102-927						
9.5	M102-928						
10.0	M102-929						
10.5	M102-930						
11.0	M102-931						
11.5	M102-932						
12.0	M102-933	3.4	M102-963	M102-964	3.4		M102-965
12.5	M102-934						
13.0	M102-935						
13.5	M102-936						
14.0	M102-937						
14.5	M102-938						
15.0	M102-939						
15.5	M102-940						
16.0	M102-941						
16.5	M102-942						
17.0	M102-943						
17.5	M102-944						
18.0	M102-945						
18.5	M102-946						
19.0	M102-947						



M102-905
Adaptor for AO-Protek shank
Cannulated Ø 4 mm



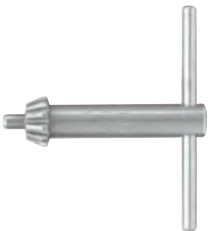
M102-908
Adaptor for Hudson



M102-907
Adaptor for Harris



M102-906
Universal three-jaw chuck
with key M7-250
Cannulated max Ø 6.35 mm

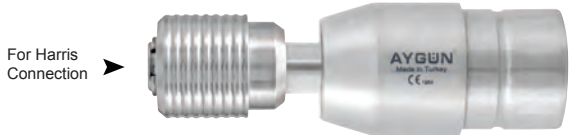


M7-250
Chuck key
for M102-906



Acetabular reamer attachment

Orthopedic Attachments



For Harris Connection

M102-320
Acetabular reamer attachment
140 rpm / 30 Nm
35 x 114 mm / 340 g



M102-705
Adaptor for AO-Protek shaft



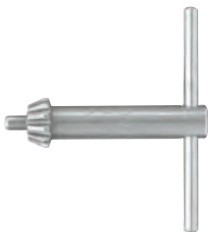
M102-706
Adaptor for DIN 58809 shaft



M102-707
Adaptor for Hudson shaft



M102-708
Universal three-jaw chuck
with key M7-250



M7-250
Chuck key
for M102-708

Acetabular reamer tools



M7-789
Movable protector case,
Fits with all reamer shafts



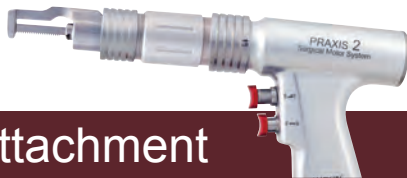
M7-709
Shaft only,
With Harris connection
For M7-750, M7-757

Only Acetabular
Reamer



M7-750	Ø 46 mm
M7-751	Ø 48 mm
M7-752	Ø 50 mm
M7-753	Ø 52 mm
M7-754	Ø 56 mm
M7-755	Ø 60 mm
M7-756	Ø 64 mm
M7-757	Ø 68 mm

Sternum saw attachment



M102-240
Sternum saw attachment
15.000 cpm / \longleftrightarrow 4 mm
37 x 159 mm / 460 g

Sternum saw blade and guide



M102-715
Saw guide



M102-710
Saw blade
usable length 35 mm

Cranial burr attachment



M102-255
Cranial burr attachment
Dura guard, rotatable
15.000 rpm
35 x 118 mm / 320 g

Cranial burr tools



M102-203
Tapered cutter



M102-332
Dura guard, rotatable

Oscillating saw



M102-241
Oscillating saw (Without Saw Blade)
15.000 cpm / $\angle 4^{\circ} 50'$
48 x 79 mm / 260 g



M7-324
Arbor, 27 mm long



M7-325
Arbor, 46 mm long



M7-320
Key only,

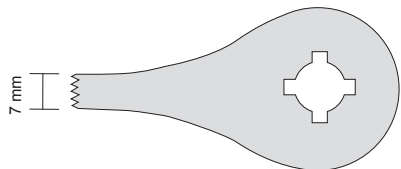


M7-352
Pair of wrenches,
for changing saw blades

Oscillating saw blades

M7-361
Deep cutting saw blade, narrow

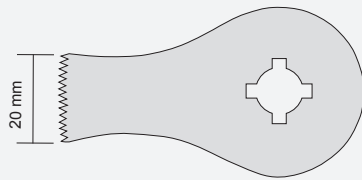
Arbor M7-324
blade M7-371



M7-371

M7-362
Deep cutting saw blade, wide

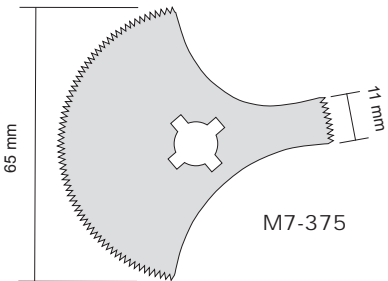
Arbor M7-324
blade M7-373



M7-373

M7-363
Saw blade with wide and narrow
serrated segments

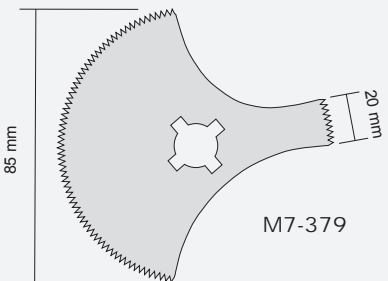
Arbor M7-324
blade M7-375



M7-375

M7-380
Saw blade with wide and narrow
serrated segments

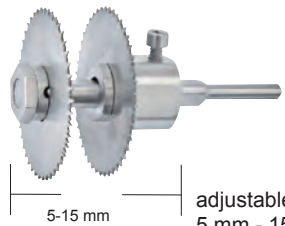
Arbor M7-324
blade M7-379



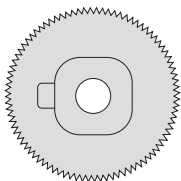
M7-379

M7-376
Double circular saw

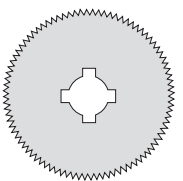
Arbor M7-325
blade M7-377 + M7-378



5-15 mm adjustable from 5 mm - 15 mm



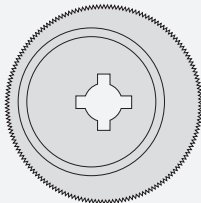
M7-377 Ø 45 mm



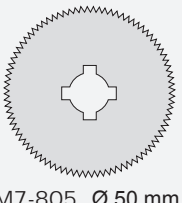
M7-378 Ø 45 mm

M7-357
65 mm diameter circular
saw blade with eccentric
disc to limit cutting depth
from 4 to 11 mm

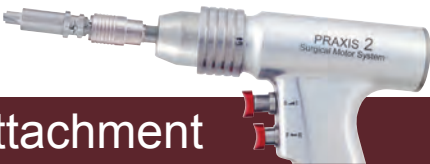
Arbor M7-325
Saw blade and
Limiting disc M7-364



M7-364 Ø 65 mm



M7-805 Ø 50 mm
M7-806 Ø 65 mm
M7-807 Ø 85 mm



Cranial perforator attachment

For Hudson ▶



M102-250
Cranial perforator attachment
(without perforator)

850 rpm / 5 Nm
35 x 110 mm / 320 g

Perforators



M7-120 Ø 6/9 mm
23 x 92 mm / 116 g



M7-121 Ø 9/12 mm
23 x 92 mm / 120 g



M7-122 Ø 12/15 mm
23 x 92 mm / 125 g

- Skull perforator
- With step-down drilling
- Automatic dura stop
- No key needed



TPLO Saw attachment



M102-970
TPLO Saw attachment
15.000 cpm / $\angle 4^{\circ} 50'$
40 x 109 mm / 400 g

Blades



M102-980	Saw Blades,	radius	6 mm, 45 x 0.6 mm
M102-981	Saw Blades,	radius	7,5 mm, 45 x 0.6 mm
M102-982	Saw Blades,	radius	9 mm, 45 x 0.6 mm
M102-983	Saw Blades,	radius	10,5 mm, 45 x 0.6 mm
M102-984	Saw Blades,	radius	12 mm, 45 x 0.6 mm
M102-985	Saw Blades,	radius	13,5 mm, 50 x 0.6 mm
M102-986	Saw Blades,	radius	15 mm, 50 x 0.6 mm

Sterilization Set

Container set for sterilization



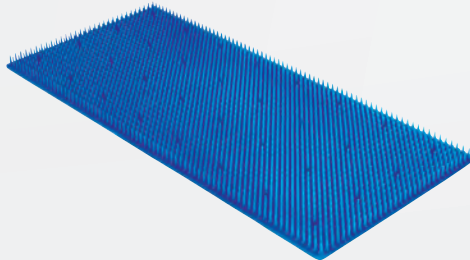
K6-029B
Container Line Perfore Model
580x280x200 mm Yellow



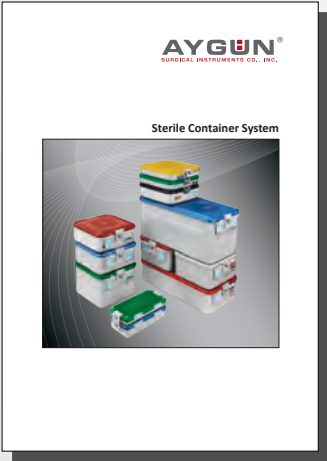
K3-742
Basket made from stainless steel sheet
540x253x70 mm



K2-462
Wire basket
540x250x70 mm



K2-526
Silicone mat
520x230 mm

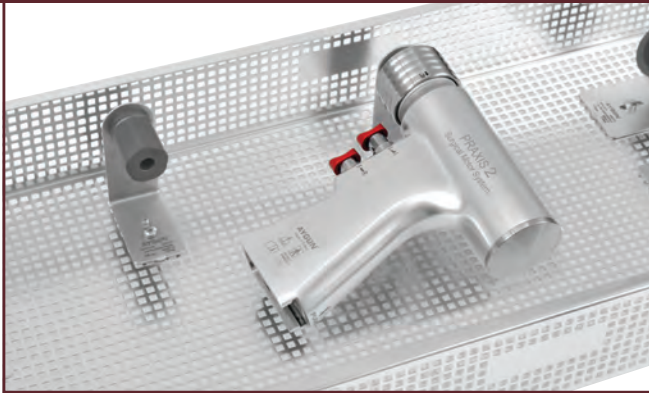


For more information and alternative please see
our Sterile Container System catalog.

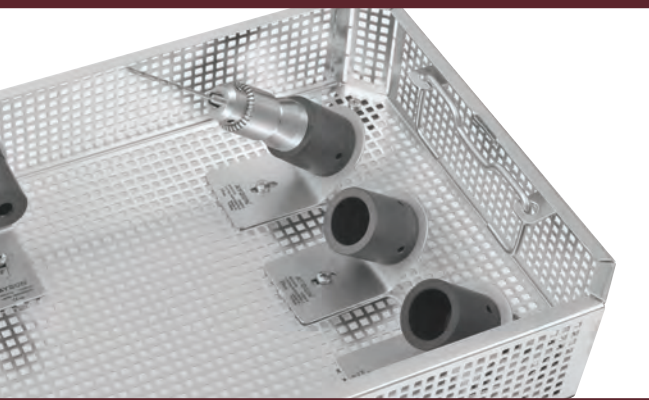
Sterilization fixations



M102-515
Sterilization fixation for handpiece



M102-516
Sterilization fixation for attachments



PRAXIS

2



2015

Meeting Point For Surgery™

AYGUN®
SURGICAL INSTRUMENTS CO., INC.

Organize Sanayi Bölgesi Yaşar Doğu Cad. No:76
55330 Kutlukent - SAMSUN / TÜRKİYE

☎ 90 (362) 266 66 80
E-mail: aygun@aygun.com

☎ 90 (362) 266 93 30
Web: www.aygun.com