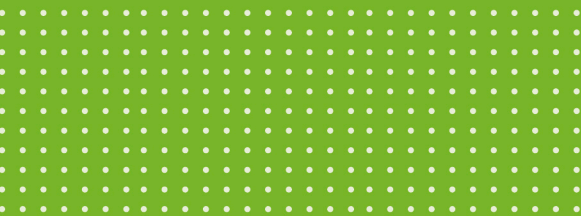




RAPTOR SPS 4

Surgical Motor Systems



" Meeting point for surgery..."

EDITON 01

AYGUN[®]
SURGICAL INSTRUMENTS CO., INC.



“ Meeting point for surgery...”

Aygün has the right to modify and develop the products declared in this catalogue and its production program.

The weight and dimensional information given in our catalog are approximate values.

KA-4028-Y1 Copyright ©
Aygün Co., Inc 2020 All Right
Reserved, Printed in Türkiye

www.aygun.com

OUR HISTORY

AYGÜN, one of the leading establishments of Turkey in the field of Medical Industry, was founded in 1988. It manufactures Container Systems for sterilization, Surgical Motor Systems, Medical Illumination Systems and Single Use Medical Systems in its facility at Samsun Central Organized Industrial Zone.

AYGÜN meets the needs of significant part of Turkey as a result of its continuous R&D works and the capacity increasing. It manufactures its products in international standards and put them to the world market with a high competitive power. Moreover with its integrated quality management system, it proves that it is a specialized establishment.

Besides being a manufacturer, AYGÜN is also a designer company and with its continuous product development works it increases number of its patents, on the other hand, is contributing career development of rising generation by acting as a school.





STERILIZATION CONTAINER SYSTEMS

All AYGÜN sterilization container systems are designed for perfect steam penetration, traceability, safety and stability. The locking mechanisms secure excellent grip and ensure up and down movement of the lids under steam pressure during the sterilization. We service our bottoms and lids made of 2 mm high quality special alloy aluminum raw material to the whole world with 8 basic color options.

CONTAINER **MODELS**

STANDARD MODEL
STANDARD PLUS MODEL
BIO-BARRIER MODEL
PPSU MODEL
WINDOW MODEL
B3 MODEL
PLASMA MODEL
A1 MODEL
SAFE MODEL



SURGICAL MOTOR SYSTEMS

The expertise of AYGÜN in surgical motor systems gathered up many designs and systems that have special structures servicing from neuro and spinal surgery to many fields like cardiovascular, orthopedic, plastic, hand & foot and maxillofacial surgery. The quality, power and ergonomic design of the new generation of high-tech battery powered surgical motor systems once again demonstrates AYGÜN's expertise in the medical field.

SURGICAL MOTOR SYSTEM **MODELS**

KARINCA 206
KARINCA 208
DERMATOME BES
DERMATOME ST-5
SKIN GRAFT MESHER
PRAXIS 3
PRAXIS 3B
Sternal Saw 3B
HSM Micro System
HSM 2 Neuro & Spine System
Mini Bone 40.000 rpm
Mini Bone Monoblock
Arthroscopy Shaver
Mini Surgical Motor
Mini Compact
Neuro Air Power
Standard Macro
EPS Motor System
Macro Compact
Mobil Stator
Raptor SPS4



SURGICAL ILLUMINATION SYSTEMS

AYGÜN is furthering a number of R&D projects simultaneously thanks to its advanced R&D infrastructure, team of engineers and technical personnel specialized in their field. Thus, the company holds tens of patents and models actively used in the medical sector.

ILLUMINATION SYSTEMS **FEATURES**

I-LIGHT LD Specifications
Superior Optical performance
Light beams configuration to provide shadowless illumination
Almost perfect color rendition (Typ. 95)
TFT touch screen for lighting control
Adjustable beam sizes to user preferences
Suitable for use with Laminar Flow functional ceilings
Easy to clean
Minimum Energy Consumption
60.000 hours LED life
Indirect Endo light for endoscopic operations



DISPOSABLE STERILIZATION PRODUCTS

AYGÜN continues expanding its product range by adding other single use medical products to the completely silicone medical drainage systems needed by surgery. With its ISO 7 clean room and by carrying its expertise on sterilization and operation solutions one step further, AYGÜN offers professional service to its valued customers in disposable medical items as well.

DISPOSABLE PRODUCTS **MODELS**

Reusable Laryngeal Mask
Silicone Penrose Drain Tube
Spiral In Tubes
Silicone Nutrition Tube
Silicone Round Drain
Silicone Flat-Soft Drain
Silicone Flat Drain
Intubation Tube
PVC Laryngeal Mask
Silicone Penrose Drain
Silicone Thorax Drain
Tracheostomy tube
Intubation Tube
Vac Silicone Drain
Oxygen Mask

GROWING UP TOGETHER

AYGÜN has an actively growing position in the sector through using a high technology and innovative institutional structure.



OUR VISION

The vision of AYGÜN is to grow in health sector according to the developing technology and sectoral innovations and serve humanity by producing new project and products appropriate to these innovations.

OUR MISSION

AYGÜN builds projects that can contribute to human health all over the world and integrates these projects to its production area and products in the light of technological developments. It constantly stays active with its innovative and explorer soul and remains taking part among the leader companies ruling the sector.

QUALITY MANAGEMENT SYSTEM

- ISO 9001:2015
- ISO 14001:2015
- ISO 45001: 2018
- ISO 13485:2016
- 93/42/EEC
- FDA 510 (K)





AYGÜN®
SURGICAL INSTRUMENTS CO., INC.

PRODUCTION

Sense of high-grade quality in each process from raw material supply to the shipment is combined with integrated quality management system according to the standards. A big stuff gathered under the same roof and adopted importance of teamwork carry all stages above the dreams and makes what is desired real.

TECHNICAL INFRASTRUCTURE

CNC Machines

Hydraulic and Eccentric Presses

Hot Presses

Conventional CNC Machines

Mold Design and Molding Technology

3D Modelling Technology

Thermoforming

Cutting Machines

Electronic Design and Manufacturing Engineering

Software Technology

Fine Mechanic Techniques

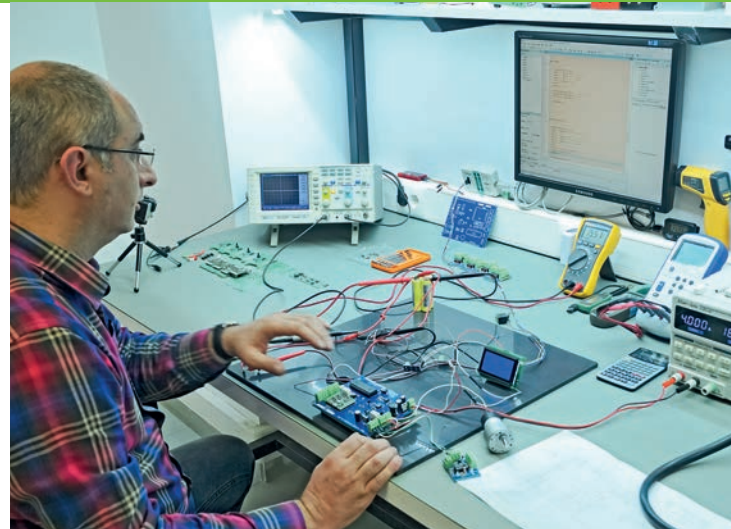
Hardening

Laser Technology

Silicone Extrusion Technology

Clean Room – ISO 7

Chemical Coating and Anodizing Technology











COMBINATION OF PRECIOUS HIGH TECHNOLOGY PRODUCTION MACHINES AND PERFECT CRAFTSMANSHIP

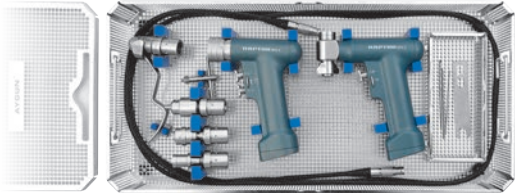
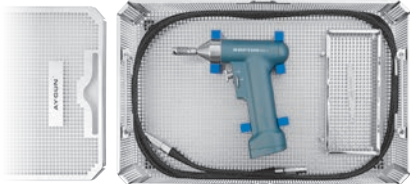
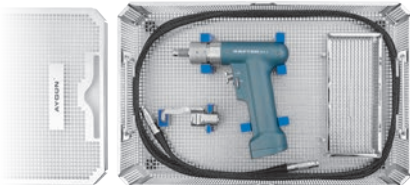
New product development desire and need began in minds becomes sharable and interpretable with 3D printers and technical drawings. After setting the models and testing the prototypes, the production process starts for the approved designs. The production starts with combination of high technology production machines and perfect craftsmanship.

RESEARCH, DEVELOPMENT, QUALITY

AYGÜN increases its power with its endless R&D works. It makes all needed investments so as to research and develop even the smallest part of the complicated products manufactured and carries out successful projects with its professional engineer team. It both develops the existing products with today's technology and performs serious works on new product designs.

TABLE OF CONTENTS

	14-15 DRILL ATTACHMENT
	16-17 SHANK DRILL BIT ATTACHMENT
	18-19 REAMER ATTACHMENT
	20-21 ACETABULAR REAMER ATTACHMENT
	22 QUICK - ACTION CHUCK (K-wire driver)
	23 RECIPROCATING SAW SYSTEM
	24-27 SAGITTAL SAW SYSTEM
	28 STERNUM SAW SYSTEM

29 OSCILLATING SAW SYSTEM (Re-Operation)	
30 ORTHOPEDIC SET	
31 DRILL SET	
32 SAGITTAL SAW SET	
33 RECIPROCATING SAW SET	
34 STERNAL SAW SET	
35 CARDIO VASCULAR SET	
36-37 CONTAINER SET FOR STERILIZATION	

- Less Weight, High Power
- Next Generation Cutting Technology
- New Generation Surgical Motor Technology



RAPTOR SPS 4

- Smooth speed control, right-left rotation and oscillation;
- High and low speed options for sensitive cutting performance;
- One hand piece solution for reaming, high speed drilling, screw driving and tapping functions with high torque performance;
- Easy handling and ergonomic design of Raptor ensures reliable and better controlled operation results;
- Replacing attachments and blades using quick couplings;
- High performance long reliability.



Hexa - Function Drill System

- Drill Mode (F&R)
- Drill Oscillation Mode
- Screwing Mode (F&R)
- Tapping Mode
- Reamer Mode (F&R)
- Reamer Oscillation Mode



Sternum Saw System



Reciprocating Saw System



Sagittal Saw System

Power, Precision and Innovation...

POWER SUPPLY & CABLE



M300-228 Raptor Power Supply

- Two motor output
- Main voltage 100-240 Volts, 50/60 Hz
- 400 watt
- Informs the user with indicator leds about motor status
- Cable not included
- Protections: Short circuit / Overload / Over voltage
- 230 x 236 x 107 mm / 2560 g



M300-223 Motor Cable (4 m. long)

DRILL-REAMER SYSTEM



Six
Different
Trigger
Functions



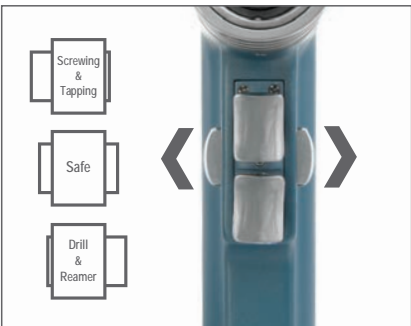
- M300-200**
Hexa - Function Drill Handpiece
(Without attachment and cable)
- Dual trigger system for speed control and direction control
 - Steam sterilisable
 - Drill Mode F&R (1200 rpm)
 - Drill Oscillation Mode (1200 cpm)
 - Screwing Mode F&R (150 rpm)
 - Tapping Mode (150 rpm)
 - Reamer Mode F&R (300 rpm)
 - Reamer Oscillation Mode (300 cpm)
 - Cannulated Ø 4 mm
 - 40 x 129 x 183 mm / 1000 g



Forward, reverse and oscillation mode options provide versatile alternatives to the users.



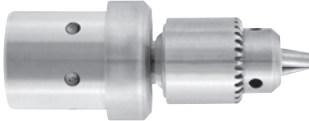
Screwing and tapping options enable smooth control with one-handpiece solution.



Drilling, Reaming, Screwing and Tapping options in one-handpiece

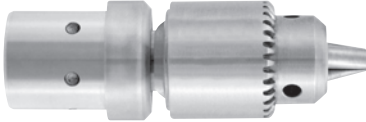
DRILL ATTACHMENTS

M206-308
Drill attachment with keyed chuck
Ø4 mm Cannulated
Ø 1.0 mm - 4.0 mm
1200 rpm / 5 Nm
29 x 70 mm / 140 g



M8-473
Chuck key
for M206-308

M206-309
Drill attachment with keyed chuck
Ø4 mm Cannulated
Ø 1.0 mm - 6.35 mm
1200 rpm / 5 Nm
29 x 87 mm / 205 g



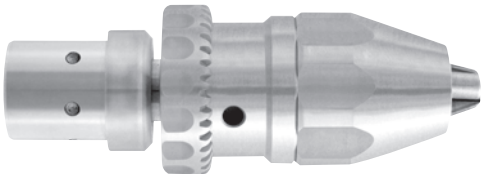
M7-250
Chuck key
for M206-309

M206-311
Drill attachment with hybrid chuck
Both keyed and keyless operation
Ø4 mm Cannulated
Ø 0.3 mm - 3 mm
1200 rpm / 5 Nm
29 x 87 mm / 225 g



M7-253
Chuck key
for M206-311

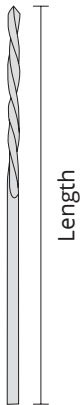
M206-310
Drill attachment with hybrid chuck
Both keyed and keyless operation
Ø4 mm Cannulated
Ø 1.0 mm - 7.4 mm
1200 rpm / 5 Nm
34 x 100 mm / 320 g



M7-252
Chuck key
for M206-310

DRILL BITS

Code	(Ø) Diameter mm	Length mm
M7-500	1.5	60
M7-501	2.0	100
M7-502	2.5	100
M7-503	2.7	100
M7-504	3.0	100
M7-505	3.2	100
M7-506	3.5	100
M7-507	4.0	110
M7-508	4.5	130
M7-509	5.0	160
M7-510	6.0	160

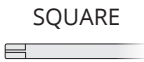
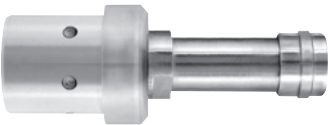


Power, Precision and Innovation...

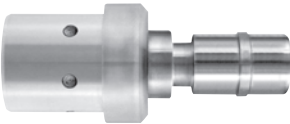
SHANK DRILL BIT ATTACHMENTS



M206-360
Attachment for SQUARE shank
1200 rpm / 5 Nm
29 x 75 mm / 115 g



M206-361
Attachment for AO shank
1200 rpm / 5 Nm
29 x 73 mm / 125 g



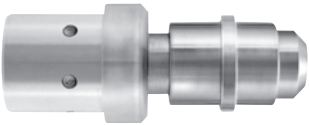
M206-362
Attachment for TRINKE shank
1200 rpm / 5 Nm
29 x 70 mm / 130 g



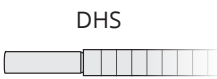
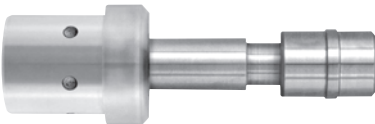
SHANK DRILL BITS

	Length mm	(Ø) Diameter mm	SQUARE	AO	TRINKE
	38	1.5	M7-520	M7-540	M7-560
	45	2.0	M7-521	M7-541	M7-561
	53	2.5	M7-522	M7-542	M7-562
	57	2.7	M7-523	M7-543	M7-563
	57	3.0	M7-524	M7-544	M7-564
	57	3.2	M7-525	M7-545	M7-565
	65	3.5	M7-526	M7-546	M7-566
	70	4.0	M7-527	M7-547	M7-567
	70	4.5	M7-528	M7-548	M7-568
	95	5.0	M7-529	M7-549	M7-569
	120	6.0	M7-530	M7-550	M7-570

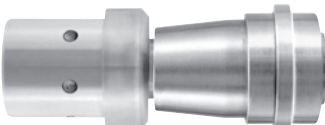
M206-375
Attachment for OSTEO shank
Ø4 mm Cannulated
300 rpm / 22 Nm
29 x 78 mm / 160 g



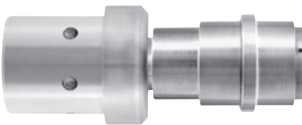
M206-376
Attachment for DHS shank
Ø4 mm Cannulated
300 rpm / 22 Nm
29 x 100 mm / 170 g



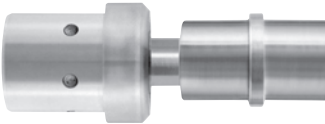
M206-377
Attachment for AO-PROTEK shank
Ø4 mm Cannulated
300 rpm / 22 Nm
29 x 82 mm / 210 g



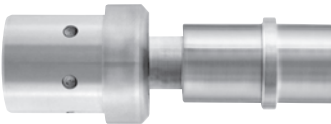
M206-378
Attachment for HUDSON shank
Ø4 mm Cannulated
300 rpm / 22 Nm
29 x 68 mm / 145 g



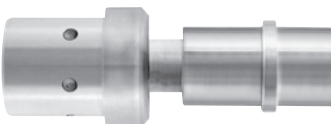
M206-320
Attachment for HARRIS shank
150 - 300 rpm / 35 Nm
29 x 80 mm / 175 g



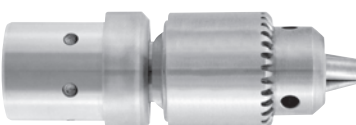
M206-380
Attachment for ZIMMER-HUDSON shank
Ø4 mm Cannulated
300 rpm / 22 Nm
29 x 115 mm / 155 g



M206-381
Attachment for ZIMMER shank
Ø4 mm Cannulated
300 rpm / 22 Nm
29 x 115 mm / 155 g

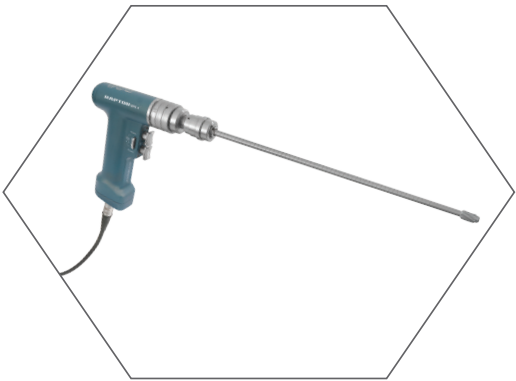


M206-312
Reamer attachment with keyed chuck
Ø4 mm Cannulated
Ø 1.0 mm - 7.4 mm
300 rpm / 22 Nm
29 x 87 mm / 205 g

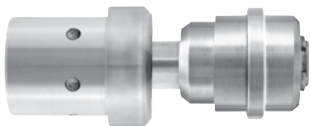


M7-250
Chuck key
for M206-312

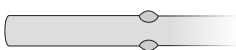
REAMER ATTACHMENT



M206-330
Reamer attachment for wire and pin
Cannulated Ø 4 mm
300 rpm / 22 Nm
29 x 80 mm / 185 g



DIN 58809



M7-905
Adaptor for AO-Protek shank
Cannulated Ø 4 mm

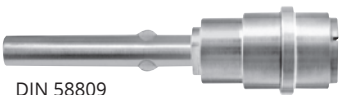


DIN 58809

AO-PROTEK



M7-908
Adaptor for Hudson
Cannulated Ø 4 mm



DIN 58809

HUDSON



M7-907
Adaptor for Harris
Cannulated Ø 4 mm

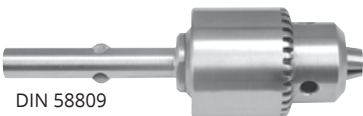


DIN 58809

HARRIS

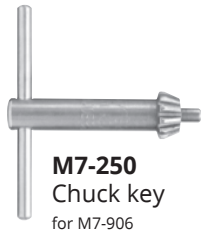


M7-906
Universal three-jaw chuck
with key M7-250
Max Ø 6.35 mm
Cannulated Ø 4 mm



DIN 58809

DRILL



M7-250
Chuck key
for M7-906

REAMERS

Intramedullary reamers, flexible, with drilling heads		Guides, blunt			Guides, with drill tip		
Ø mm	Length 430 mm	Ø mm	Length 600 mm	Length 990 mm	Ø mm	Length 600 mm	Length 990 mm
5.5	M7-920						
6.0	M7-921						
6.5	M7-922	1.9	M7-960	M7-961	1.9	M7-962	
7.0	M7-923						
7.5	M7-924						
8.0	M7-925						
8.5	M7-926						
9.0	M7-927						
9.5	M7-928						
10.0	M7-929						
10.5	M7-930						
11.0	M7-931						
11.5	M7-932						
12.0	M7-933	3.4	M7-963	M7-964	3.4		M7-965
12.5	M7-934						
13.0	M7-935						
13.5	M7-936						
14.0	M7-937						
14.5	M7-938						
15.0	M7-939						
15.5	M7-940						
16.0	M7-941						
16.5	M7-942						
17.0	M7-943						
17.5	M7-944						
18.0	M7-945						
18.5	M7-946						
19.0	M7-947						

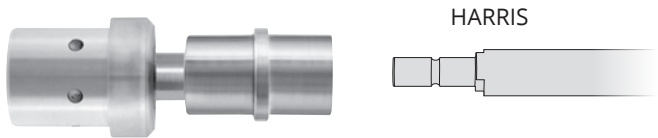
DIN 58809

Power, Precision and Innovation...

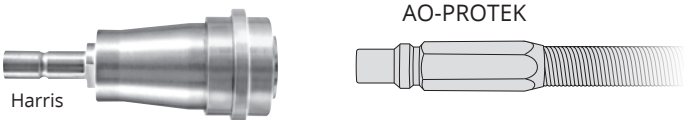
ACETABULAR REAMER ATTACHMENT



M206-320
Acetabular reamer attachment
150 - 300 rpm / 35 Nm
29 x 80 mm / 175 g



M7-705
Adaptor for AO-Protek shaft



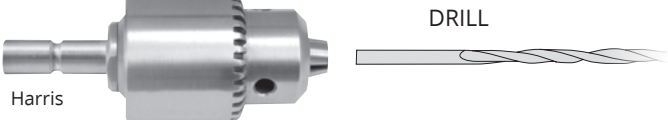
M7-706
Adaptor for DIN 58809 shaft



M7-707
Adaptor for Hudson shaft



M7-708
Universal three-jaw chuck
with key M7-250



ACETABULAR REAMER TOOLS



M7-709
Shaft only,
With Harris Connection
for M7-750, M7-757



M7-789
Movable protector case,
Fits with all reamer shafts

Only Acetabular Reamer		M7-750	Ø 46 mm
		M7-751	Ø 48 mm
		M7-752	Ø 50 mm
		M7-753	Ø 52 mm
		M7-754	Ø 56 mm
		M7-755	Ø 60 mm
		M7-756	Ø 64 mm
		M7-757	Ø 68 mm

QUICK - ACTION CHUCK

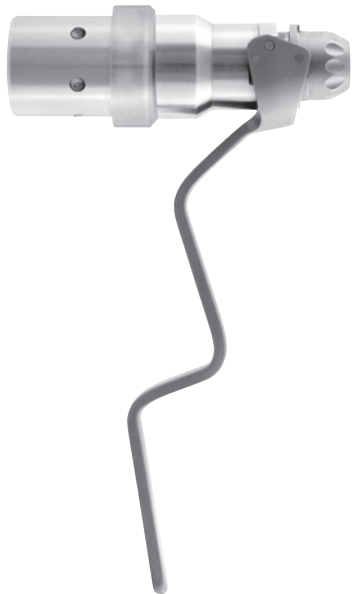
(K-wire Driver)



M206-349
Quick - action chuck (K-wire Driver)
Cannulated Ø 0.6 mm - 1.0 mm
1200 rpm / 5 Nm
29 X 77 mm / 300 g

M206-352
Quick - action chuck (K-wire Driver)
Cannulated Ø 0.7 mm - 2.5 mm
1200 rpm / 5 Nm
29 X 77 mm / 300 g

M206-353
Quick - action chuck (K-wire Driver)
Cannulated Ø 1.5 mm - 4.0 mm
1200 rpm / 5 Nm
29 X 77 mm / 300 g



RECIPROCATING SAW SYSTEM



M300-235
Reciprocating Saw Handpiece
(Without saw blades and cable)

High-Low speed options
Steam sterilisable
11.000 - 14.000 cpm / \longleftrightarrow 4 mm
40 x 162 x 185 mm / 1140 g

RECIPROCATING SAW BLADES

M103-236
Usable length: 62 mm
Width: 8 mm



M103-237
Usable length: 75 mm
Width: 13 mm



M103-238
Usable length: 60 mm
Width: 13 mm

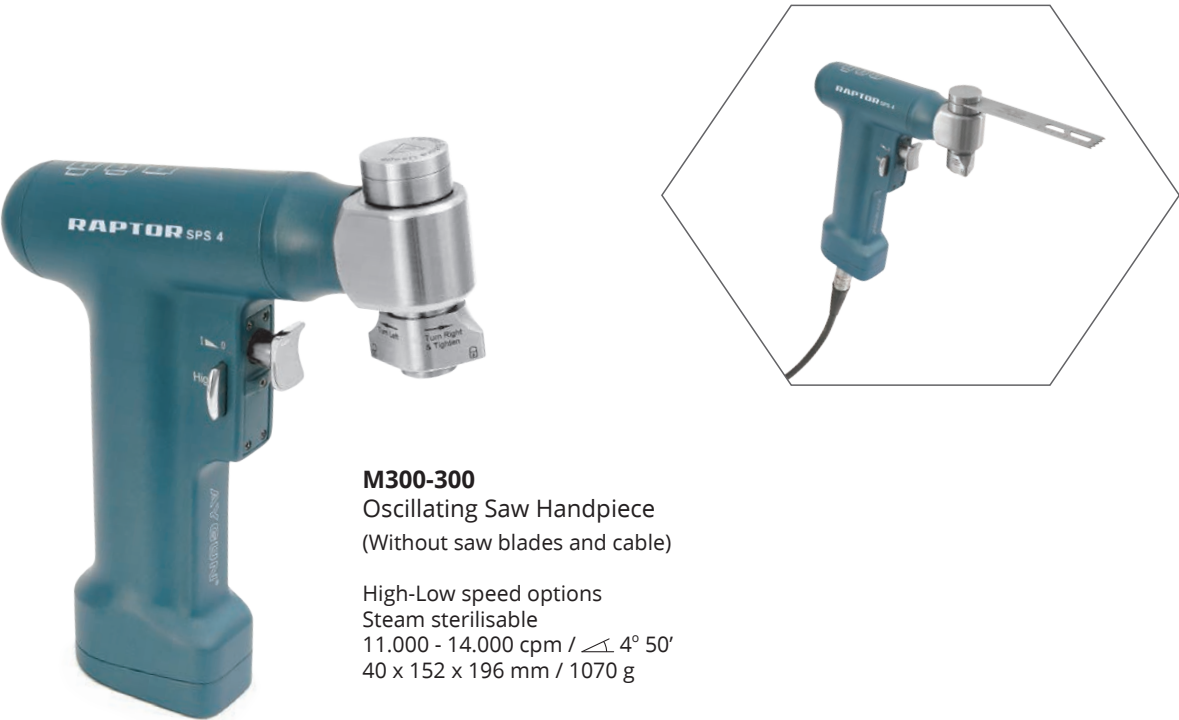


M103-239
Usable length: 75 mm
Width: 13 mm

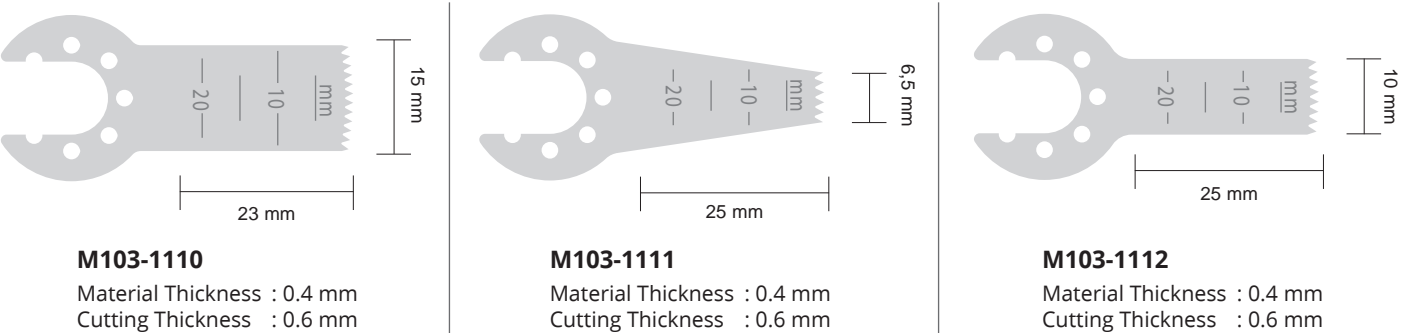


Power, Precision and Innovation...

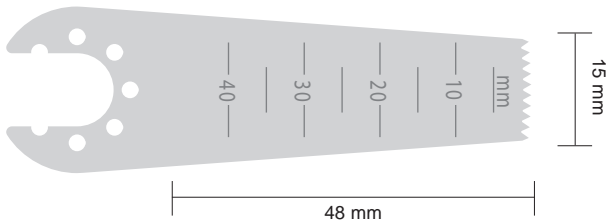
SAGITTAL SAW SYSTEM



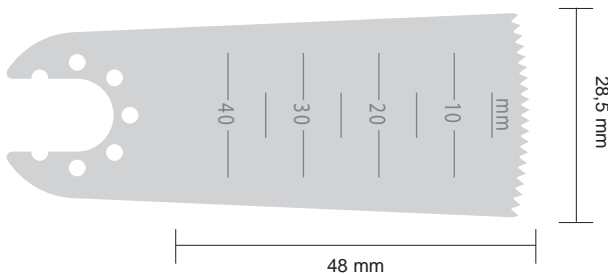
SAGITTAL SAW BLADES



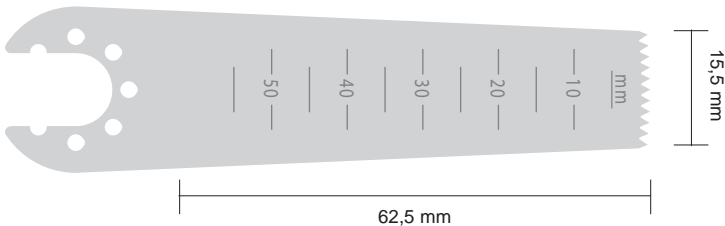
M103-1113
Material Thickness : 0.4 mm
Cutting Thickness : 0.6 mm



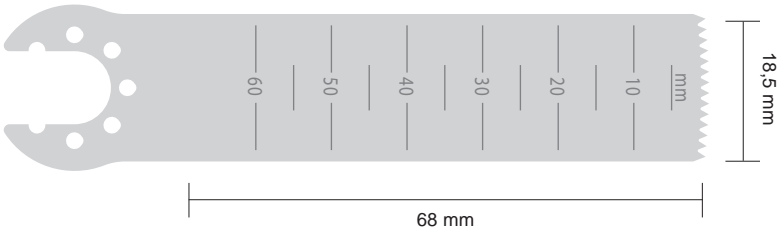
M103-1114
Material Thickness : 0.4 mm
Cutting Thickness : 0.6 mm



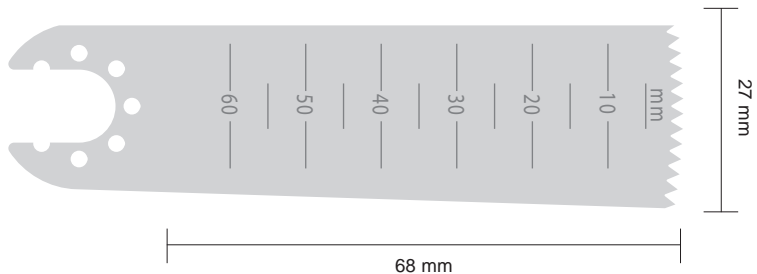
M103-1115
Material Thickness : 0.6 mm
Cutting Thickness : 0.8 mm



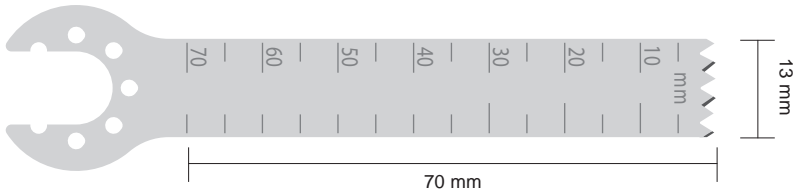
M103-1116
Material Thickness : 0.6 mm
Cutting Thickness : 0.8 mm



M103-1117
Material Thickness : 0.6 mm
Cutting Thickness : 0.8 mm

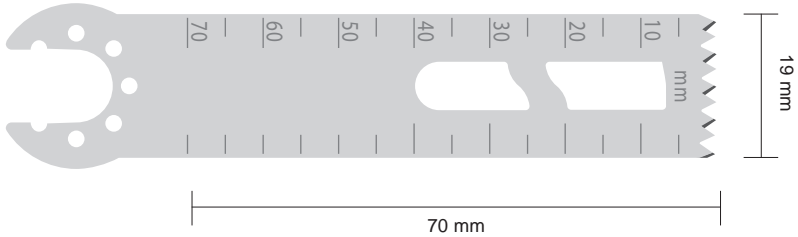


M103-1118
Material Thickness : 1.19 mm

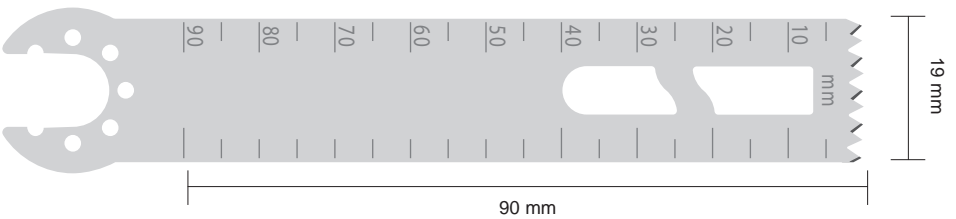


Power, Precision and Innovation...

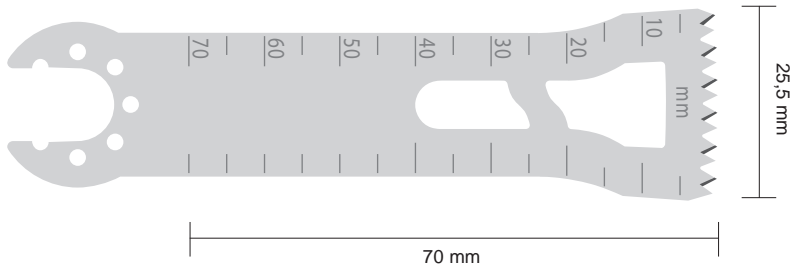
M103-1119
Material Thickness: 1 mm



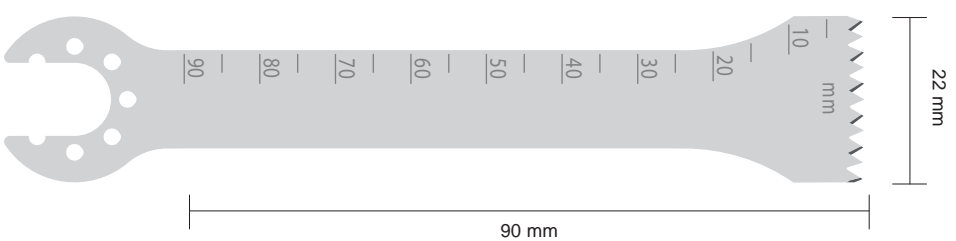
Material Thickness
M103-1136 1.27 mm
M103-1137 1.37 mm



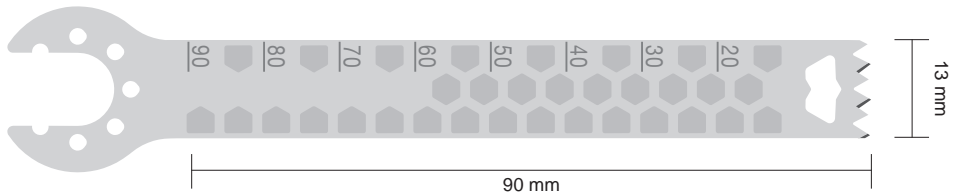
M103-1120
Material Thickness: 1 mm



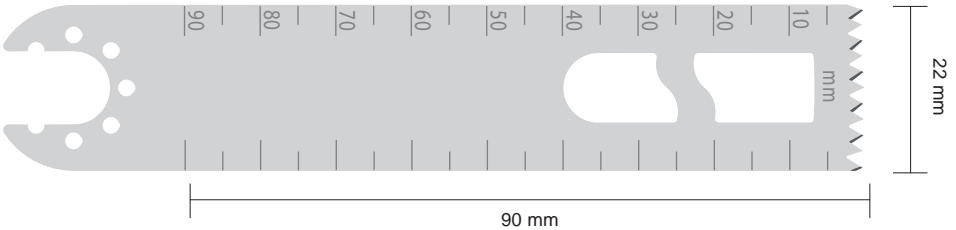
M103-1138
Material Thickness: 1.27 mm



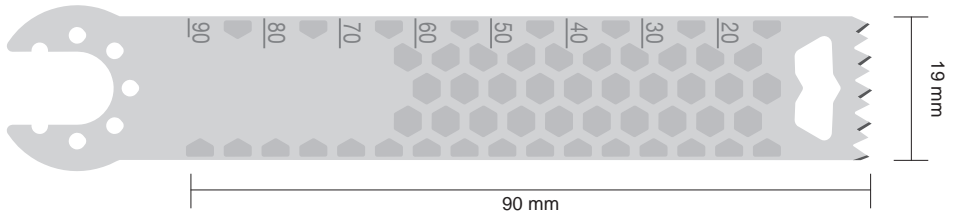
Material Thickness
M103-1121 1 mm
M103-1122 1.19 mm
M103-1123 1.27 mm
M103-1124 1.37 mm



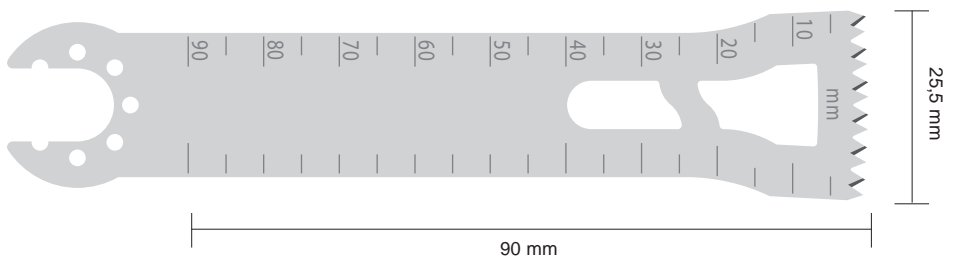
Material Thickness
M103-1139 1 mm
M103-1140 1.27 mm



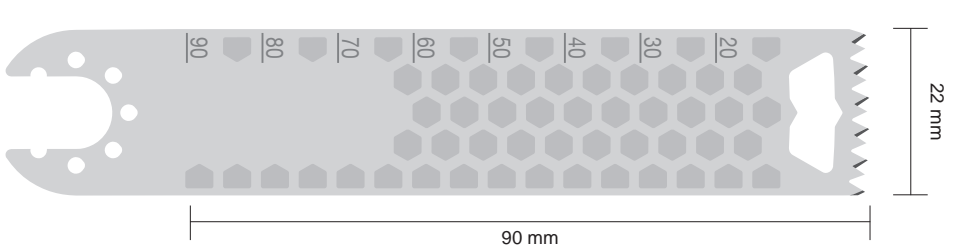
Material Thickness
M103-1125 1.19 mm
M103-1126 1.27 mm
M103-1127 1.37 mm



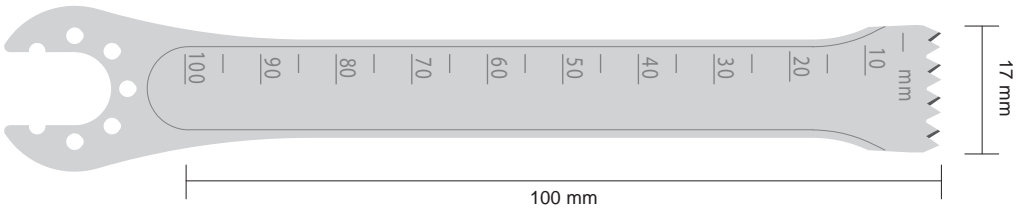
Material Thickness
M103-1141 1 mm
M103-1142 1.19 mm
M103-1143 1.27 mm
M103-1144 1.37 mm
M103-1145 1.47 mm



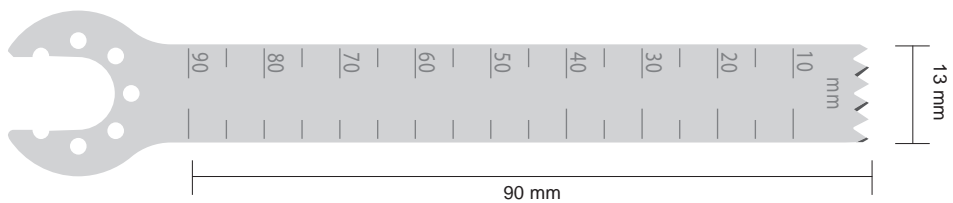
Material Thickness
M103-1128 1 mm
M103-1129 1.19 mm
M103-1130 1.27 mm
M103-1131 1.37 mm
M103-1132 1.47 mm



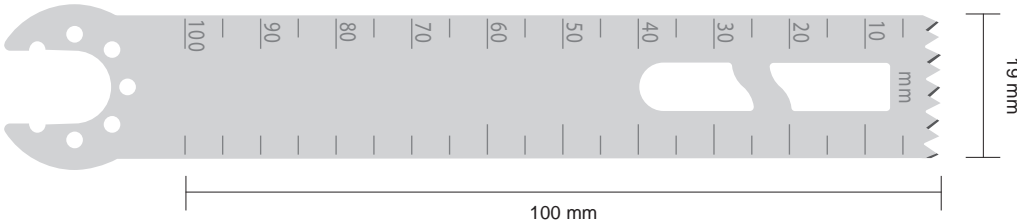
M103-1146
Material Thickness: 1.27 mm



Material Thickness
M103-1133 1 mm
M103-1134 1.19 mm
M103-1135 1.27 mm



M103-1147
Material Thickness: 1.19 mm



STERNUM SAW SYSTEM



M300-240
Sternum Saw Handpiece
(Without saw blades, guide and cable)

High-Low speed options
Steam sterilisable
11.000 - 14.000 cpm / \longleftrightarrow 4 mm
40 x 162 x 185 mm / 1125 g

OSCILLATING SAW SYSTEM

(Re-operation)



M300-300
Oscillating Saw Handpiece
(Without saw blades and cable)

High-Low speed options
Steam sterilisable
11.000 - 14.000 cpm / \angle 4° 50'
40 x 152 x 196 mm / 1070 g

M103-715
Adult saw guide



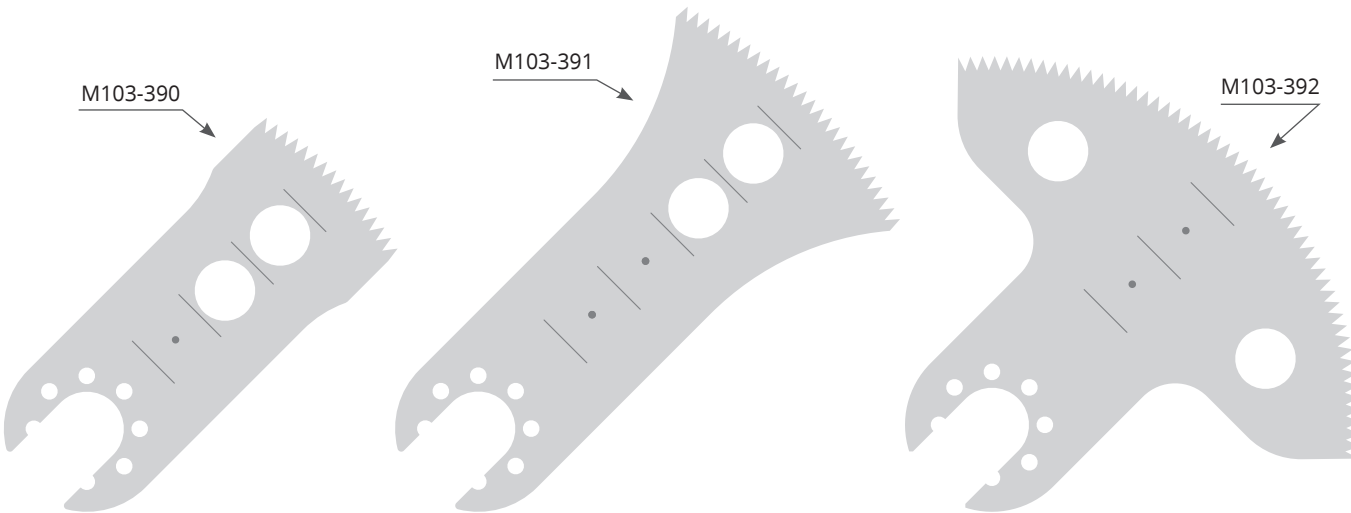
Adult saw blade	Code	Length	Usable Length	Blade Thickness	Cutting Thickness
	M103-709	58 mm	35 mm	0.6 mm	1 mm
	M103-710	58 mm	35 mm	0.8 mm	1.2 mm

M103-716
Pediatric saw guide



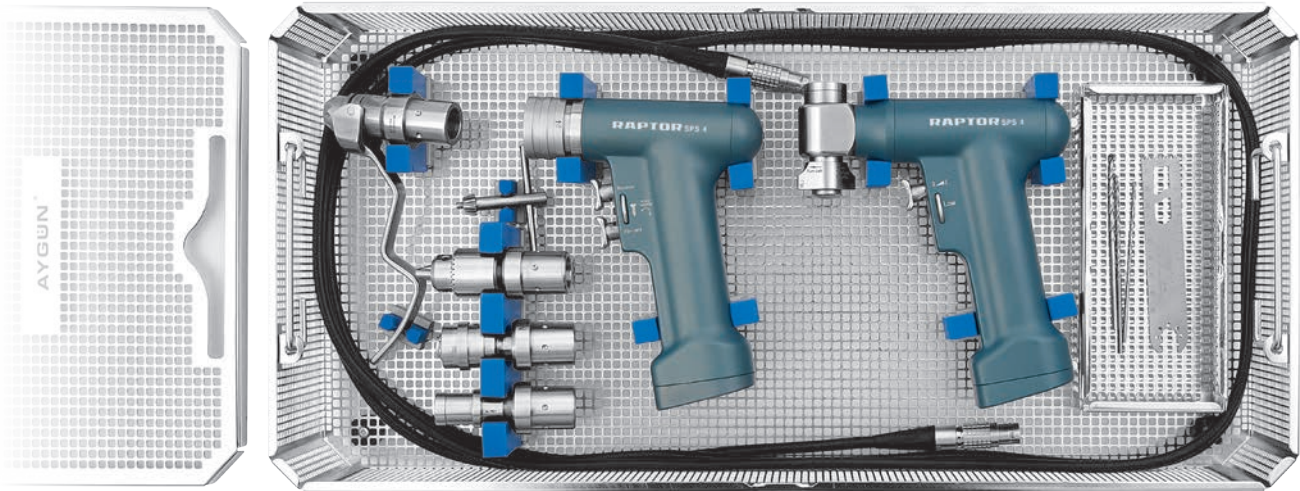
Pediatric saw blade	Code	Length	Usable Length	Blade Thickness	Cutting Thickness
	M103-711	40 mm	18 mm	0.6 mm	0.6 mm
	M103-712	40 mm	18 mm	0.6 mm	0.8 mm

BLADES (for M206-300)



Code	Length	Width	Thickness
M103-390	35 mm	25 mm	0.8 mm
M103-391	50 mm	40 mm	0.8 mm
M103-392	35 mm	75 mm	0.8 mm

ORTHOPEDIC SET



M300-1001 Orthopedic Set

Set Content

M300-200	Drill-Reamer Handpiece
M300-228	Raptor Power Supply
M300-223	Motor cable
M206-309	Drill attachment with keyed chuck
M7-502	Drill bit
M7-504	Drill bit
M7-250	Chuck key for M206-309
M300-300	Sagittal saw Handpiece
M103-1117	Sagittal saw blade
M103-1146	Sagittal saw blade
M206-320	Acetabular reamer attachment
M206-330	Reamer attachment for wire and pin
M206-352	Quick - action chuck (K-wire Driver)
M14-816	Spray oil
K3-2723-S3	Basket with silicone fixations 546 x 259 x 114 mm
K6-022	Standard Model Container 600 x 285 x 155 mm



M300-228
Raptor Power Supply



M14-816
Spray oil, for motor and additional pcs.
After cleaning of every use. Oil inside of all moving pcs of device by spraying method and run the device for 2-3 seconds.

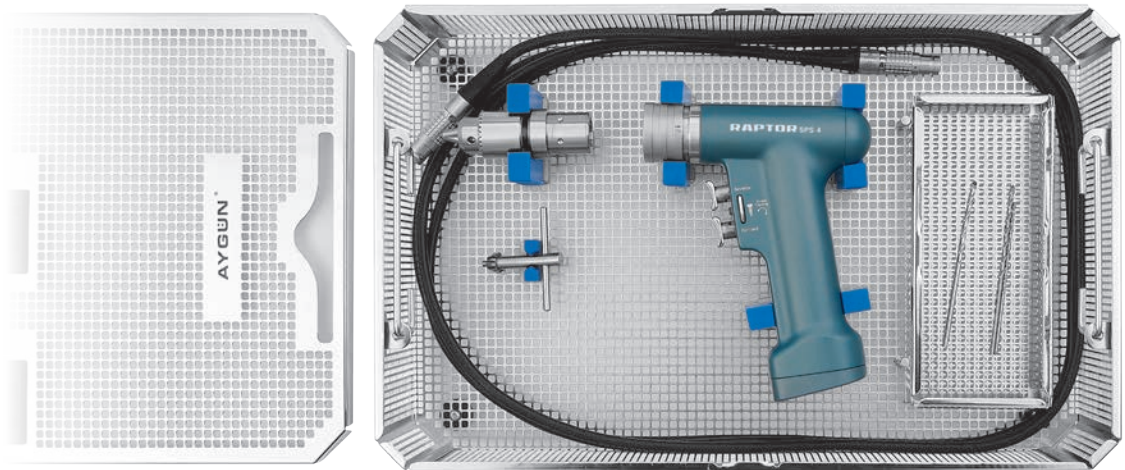


K6-022
Standard Model Container
Box (non perforated) Lid perforated
600 x 285 x 155 mm



K3-2723-S3
Basket with silicone fixations
546 x 259 x 114 mm

DRILL SET



M300-1005 Drill Set

Set Content

M300-200	Drill-Reamer Handpiece
M300-228	Raptor Power Supply
M300-223	Motor cable
M206-309	Drill attachment with keyed chuck
M7-502	Drill bit
M7-504	Drill bit
M7-250	Chuck key for M206-309
M14-816	Spray oil
K3-2731-S12	Basket with silicone fixations 411 x 259 x 114 mm
K6-252	Standard Model Container 475 x 285 x 155 mm



M300-228
Raptor Power Supply



M14-816
Spray oil, for motor and additional pcs.
After cleaning of every use. Oil inside of all moving pcs of device by spraying method and run the device for 2-3 seconds.

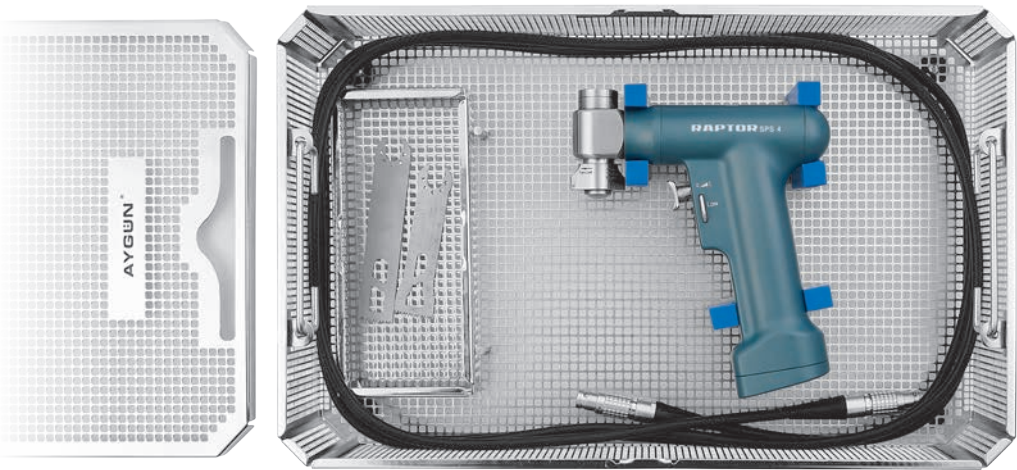


K6-252
Standard Model Container
Box (non perforated) Lid perforated
475 x 285 x 155 mm



K3-2731-S12
Basket with silicone fixations
411 x 259 x 114 mm

SAGITTAL SAW SET



M300-1007 Sagittal Saw Set

Set Content	
M300-300	Sagittal saw Handpiece
M300-228	Raptor Power Supply
M300-223	Motor cable
M103-1117	Sagittal saw blade
M103-1146	Sagittal saw blade
M14-816	Spray oil
K3-2731-S13	Basket with silicone fixations 411 x 259 x 114 mm
K6-252	Standard Model Container 475 x 285 x 155 mm



M300-228
Raptor Power Supply



M14-816
Spray oil, for motor and additional pcs.
After cleaning of every use. Oil inside of all moving pcs of device by spraying method and run the device for 2-3 seconds.

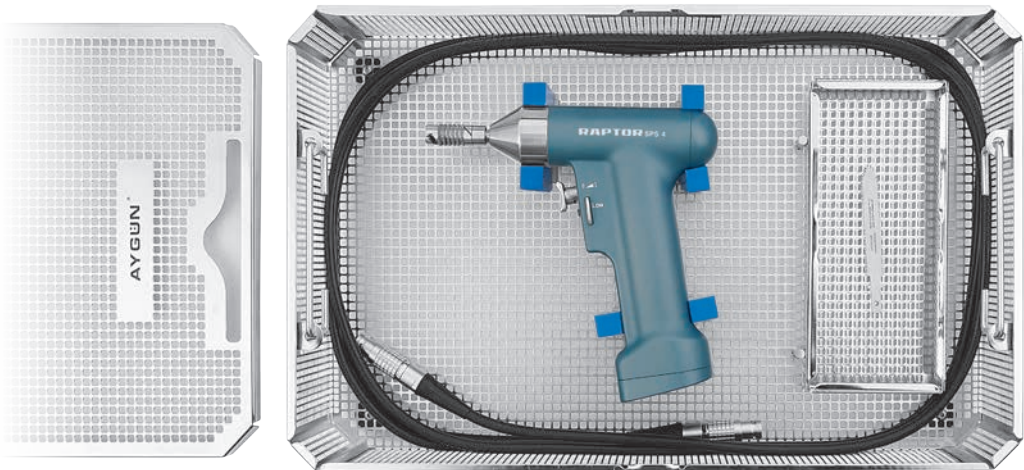


K6-252
Standard Model Container
Box (non perforated) Lid perforated
475 x 285 x 155 mm



K3-2731-S13
Basket with silicone fixations
411 x 259 x 114 mm

RECIPROCATING SAW SET



M300-1013 Reciprocating Saw Set

Set Content	
M300-235	Reciprocating saw Handpiece
M300-228	Raptor Power Supply
M300-223	Motor cable
M103-239	Reciprocating saw blade
M14-816	Spray oil
K3-2731-S14	Basket with silicone fixations 411 x 259 x 114 mm
K6-252	Standard Model Container 475 x 285 x 155 mm



M300-228
Raptor Power Supply



M14-816
Spray oil, for motor and additional pcs.
After cleaning of every use. Oil inside of all moving pcs of device by spraying method and run the device for 2-3 seconds.

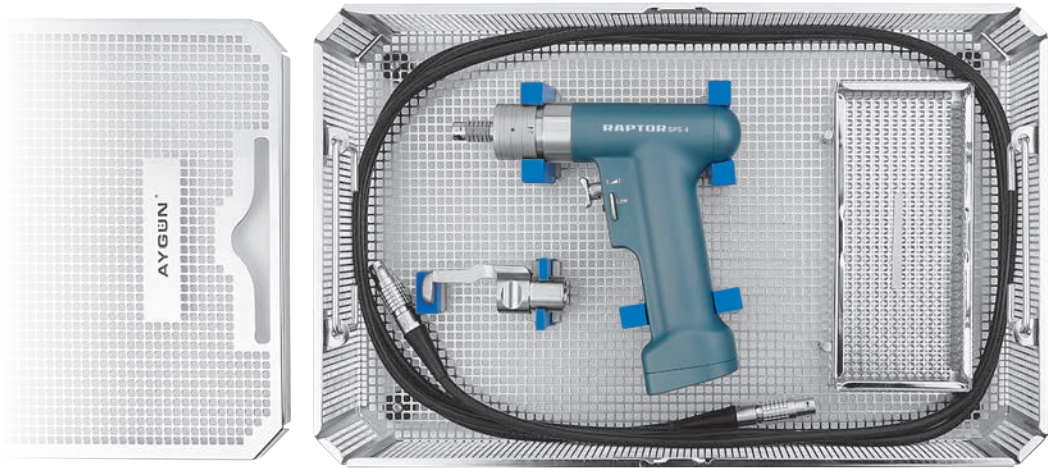


K6-252
Standard Model Container
Box (non perforated) Lid perforated
475 x 285 x 155 mm



K3-2731-S14
Basket with silicone fixations
411 x 259 x 114 mm

STERNAL SAW SET



M300-1009 Sternal Saw Set

Set Content

M300-240	Sternum saw Handpiece
M300-228	Raptor Power Supply
M300-223	Motor cable
M103-715	Adult saw guide
M103-710	Adult saw blade
M14-816	Spray oil
K3-2731-S15	Basket with silicone fixations 411 x 259 x 114 mm
K6-252	Standard Model Container 475 x 285 x 155 mm



M300-228
Raptor Power Supply



M14-816
Spray oil, for motor and additional pcs.
After cleaning of every use. Oil inside of all moving pcs of device by spraying method and run the device for 2-3 seconds.

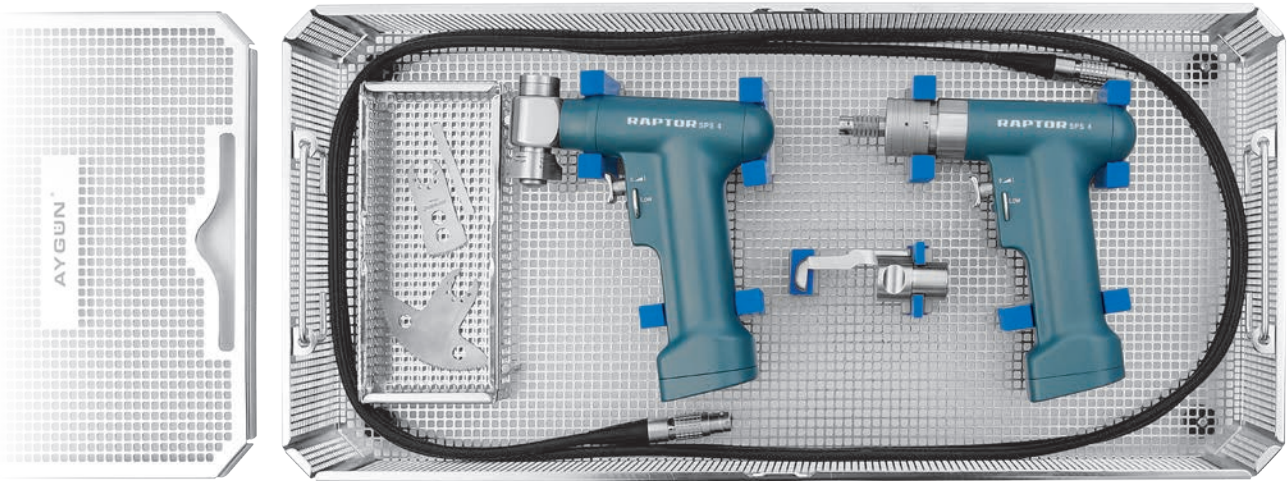


K6-252
Standard Model Container
Box (non perforated) Lid perforated
475 x 285 x 155 mm



K3-2731-S15
Basket with silicone fixations
411 x 259 x 114 mm

CARDIO VASCULAR SET



M300-1011 Cardio Vascular Set

Set Content

M300-240	Sternum saw Handpiece
M300-228	Raptor Power Supply
M300-223	Motor cable
M300-300	Re-Operation saw Handpiece
M103-715	Adult saw guide
M103-710	Adult saw blade
M103-392	Re-Operation saw blade
M14-816	Spray oil
K3-2723-S4	Basket with silicone fixations 546 x 259 x 114 mm
K6-022	Standard Model Container 600 x 285 x 155 mm



M300-228
Raptor Power Supply



M14-816
Spray oil, for motor and additional pcs.
After cleaning of every use. Oil inside of all moving pcs of device by spraying method and run the device for 2-3 seconds.



K6-022
Standard Model Container
Box (non perforated) Lid perforated
600 x 285 x 155 mm



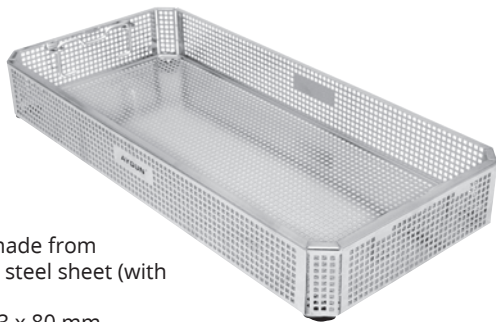
K3-2723-S4
Basket with silicone fixations
546 x 259 x 114 mm

CONTAINER SET FOR STERILIZATION



K8-123V
Lid, B3 Barrier Model
602 x 285 mm

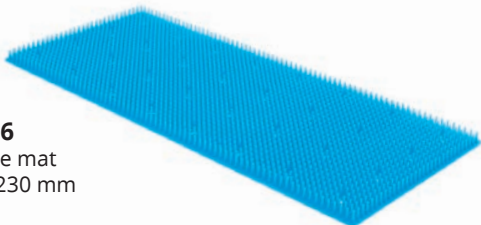
K6-107
Container, non perforated
600 x 272 x 138 mm



K3-742
Basket made from
stainless steel sheet (with
stand)
540 x 253 x 80 mm



K2-462
Wire basket
540 x 250 x 70 mm

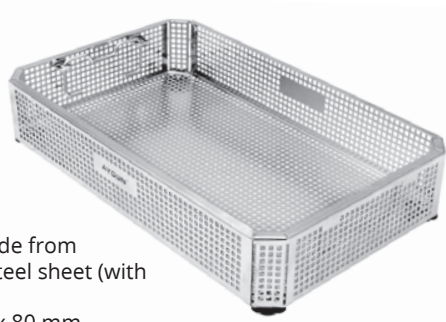


K2-526
Silicone mat
520 x 230 mm



K8-343V
Lid, B3 Barrier Model
477 x 285 mm

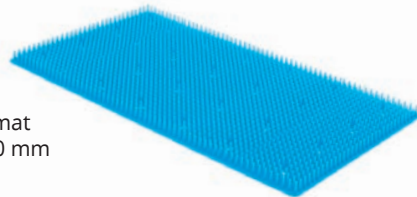
K6-307
Container, non perforated
475 x 272 x 138 mm



K3-750
Basket made from
stainless steel sheet (with
stand)
405 x 253 x 80 mm



K2-1502
Wire basket
405 x 250 x 70 mm



K2-524
Silicone mat
380 x 230 mm



K2-674
Class 6 Emulating Indicator Card
1 Pack (250 pcs)

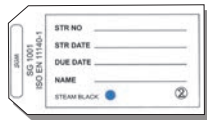


	code	color
Basic Set	K2-700	Red
Thoracotomy	K2-701	Blue
Orthopedic Set	K2-702	Green
Bone Set	K2-703	Yellow
Laminectomy	K2-704	Grey
Neuro Surgery	K2-705	Black
Cardiovascular	K2-706	Pink
Thoracotomy	K2-707	Brown

Identification labels (aluminium)
Coloured identification labels
Engraved to your specifications
Maximum 16 letters



K2-673
Labels (paper)
100 pcs. With indicator.
For small size and special
containers



K2-672
Labels (paper)
100 pcs. With indicator.
For full and half size containers



K1-900
Modular Auto Lock Mechanism (2 Pcs)



K2-660 red
Security seal
100 pcs made of plastic



K2-740
Single use paper
filter 100 pcs
with indicator.
Aygün mark.



For more information and alternative please see
our Sterilization Container System catalog.
From our website www.aygun.com



INDEX

CODE	PAGE	CODE	PAGE	CODE	PAGE	CODE	PAGE	CODE	PAGE
K1-900	37	M7-508	15	M7-752	21	M7-964	19	M103-1136	27
K2-462	36	M7-509	15	M7-753	21	M7-965	19	M103-1137	27
K2-524	36	M7-510	15	M7-754	21	M8-473	15	M103-1138	27
K2-526	36	M7-520	16	M7-755	21	M14-816	30, 31	M103-1139	27
K2-660	37	M7-521	16	M7-756	21	M103-236	23	M103-1140	27
K2-672	37	M7-522	16	M7-757	21	M103-237	23	M103-1141	27
K2-673	37	M7-523	16	M7-789	21	M103-238	23	M103-1142	27
K2-674	37	M7-524	16	M7-905	18	M103-239	23	M103-1143	27
K2-700	37	M7-525	16	M7-906	18	M103-390	29	M103-1144	27
K2-701	37	M7-526	16	M7-907	18	M103-391	29	M103-1145	27
K2-702	37	M7-527	16	M7-908	18	M103-392	29	M103-1146	27
K2-703	37	M7-528	16	M7-920	19	M103-709	28	M103-1147	27
K2-704	37	M7-529	16	M7-921	19	M103-710	28	M206-308	15
K2-705	37	M7-530	16	M7-922	19	M103-711	28	M206-309	15
K2-706	37	M7-540	16	M7-923	19	M103-712	28	M206-310	15
K2-707	37	M7-541	16	M7-924	19	M103-715	28	M206-311	15
K2-740	37	M7-542	16	M7-925	19	M103-716	28	M206-312	17
K2-1502	36	M7-543	16	M7-926	19	M103-1110	24	M206-320	17, 20
K3-742	36	M7-544	16	M7-927	19	M103-1111	24	M206-330	18
K3-750	36	M7-545	16	M7-928	19	M103-1112	24	M206-349	22
K3-2723-S3	30	M7-546	16	M7-929	19	M103-1113	25	M206-352	22
K3-2723-S4	35	M7-547	16	M7-930	19	M103-1114	25	M206-353	22
K3-2731-S12	31	M7-548	16	M7-931	19	M103-1115	25	M206-360	16
K3-2731-S13	32	M7-549	16	M7-932	19	M103-1116	25	M206-361	16
K3-2731-S14	33	M7-550	16	M7-933	19	M103-1117	25	M206-362	16
K3-2731-S15	34	M7-560	16	M7-934	19	M103-1118	25	M206-375	17
K6-022	30	M7-561	16	M7-935	19	M103-1119	26	M206-376	17
K6-107	36	M7-562	16	M7-936	19	M103-1120	26	M206-377	17
K6-252	31	M7-563	16	M7-937	19	M103-1121	26	M206-378	17
K6-307	36	M7-564	16	M7-938	19	M103-1122	26	M206-380	17
K8-123V	36	M7-565	16	M7-939	19	M103-1123	26	M206-381	17
K8-343V	36	M7-566	16	M7-940	19	M103-1124	26	M300-200	14
M7-250	15, 17, 18	M7-567	16	M7-941	19	M103-1125	26	M300-223	13
M7-252	15	M7-568	16	M7-942	19	M103-1126	26	M300-228	13
M7-253	15	M7-569	16	M7-943	19	M103-1127	26	M300-235	23
M7-500	15	M7-570	16	M7-944	19	M103-1128	26	M300-240	28
M7-501	15	M7-705	20	M7-945	19	M103-1129	26	M300-300	24, 29
M7-502	15	M7-706	20	M7-946	19	M103-1130	26	M300-1001	30
M7-503	15	M7-707	20	M7-947	19	M103-1131	26	M300-1005	31
M7-504	15	M7-708	20	M7-960	19	M103-1132	26	M300-1007	32
M7-505	15	M7-709	21	M7-961	19	M103-1133	26	M300-1009	34
M7-506	15	M7-750	21	M7-962	19	M103-1134	26	M300-1011	35
M7-507	15	M7-751	21	M7-963	19	M103-1135	26	M300-1013	33



FACTORY

AYGÜN CERRAHİ ALETLER A.Ş.
Organize Sanayi Bölgesi
Yaşar Doğu Caddesi, No: 76
Kerimbey OSB, 55300, Tekkeköy
SAMSUN, TÜRKİYE

T : +90 (362) 266 66 80
F : +90 (362) 266 93 30

aygun@aygun.com
www.aygun.com